



# TechNote: 5b-WordPress Install - IIS 5-1 PHP 5-2-x phpinfo Tests

## ***Introduction:***

For several days I have been unsure if I had installed PHP correctly, or not, because, one of the tests after installing PHP is to run phpinfo( ) and verify the results. Everything looked fine except the value for “Configuration File Path”. No matter what I did it reported back as: “C:\WINDOWS”. This TechNote explores and resolves that issue.

<b>Introduction:</b>	<b>1</b>
<b>Prerequisites:</b>	<b>1</b>
<b>My Development Environment:</b>	<b>1</b>
<b>Special Notes:</b>	<b>1</b>
<b>Homework:</b>	<b>2</b>
<b>The Tests:</b>	<b>2</b>
Test 1:	2
Test 2:	5
Test 3:	7
Test 4:	8
<b>Conclusions:</b>	<b>10</b>
<b>Next Step:</b>	<b>11</b>

## ***Prerequisites:***

TechNote: 0-WordPress Install Sequence On XP Pro plus Reference Links.

**Note:** If you are reading this install series for XP Pro and IIS 5.1 for the first time, it is highly recommended that you at least scan through the prior “pre-req” documents.

## ***My Development Environment:***

See TechNote: 0-WordPress Install Sequence On XP Pro plus Reference Links

## ***Special Notes:***

**Trademark Note:** the inclusion of screenshots, in this or other documents without a Trademark™ symbol by my “FromTheRanks” Blog-site Title or Logo does not imply these are not Trademarked. They are. These are early in-development screenshots taken before the™ was added.

**Format Change:** to accelerate the release of the WordPress TechNote series on [www.fromtheranks.com](http://www.fromtheranks.com), from TechNote 5a on I have changed the post content format. I have elected to provide basic introductory





information only in the on-line post and the entire post (text and images) in the PDF version. Doing so allows me to publish (and update) the series far more quickly.

### ***Homework:***

After quite a bit of on-line research into the apparent PHP install problem, as noted above, I was still left wondering what was wrong. To help resolve the phpinfo() “issue”, at the suggestion of Peter Guy of [www.peterguy.com](http://www.peterguy.com), and with some initial guidance by Daniel Brown of [www.php.net](http://www.php.net), I conducted a series of tests using two scripts:

The first is “test-php-ini-loaded.php” (stored in c:\inetpub\wwwroot), which has the following code:

```
<?php
$inipath = php_ini_loaded_file();

if ($inipath) {
    echo 'Loaded php.ini: ' . $inipath;
} else {
    echo 'A php.ini file is not loaded';
}
?>
```

The second script is even simpler, it calls phpinfo( ). It is named test.php, is stored in “c:\inetpub\wwwroot”, and has the following code:

```
<?php phpinfo( ); ?>
```

**Note:** each screen-shot is “fresh”, i.e. no copy-paste of images was used during the testing.

### ***The Tests:***

#### **Test 1:**

PHPRC environment variable and IniFilePath Registry left in place and active

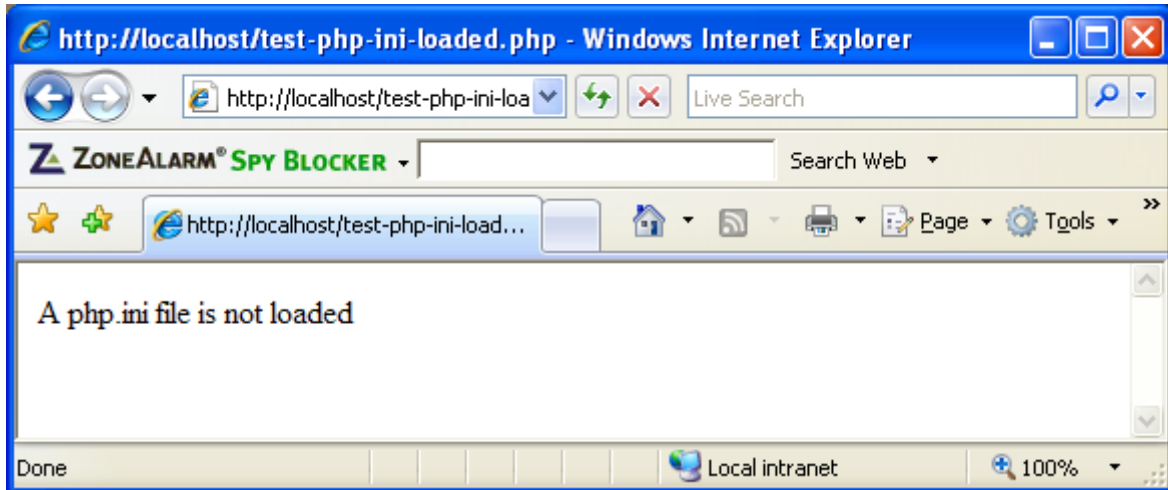
Verified no other copies of php.ini exist on the system

Renamed php.ini to hold-php.ini

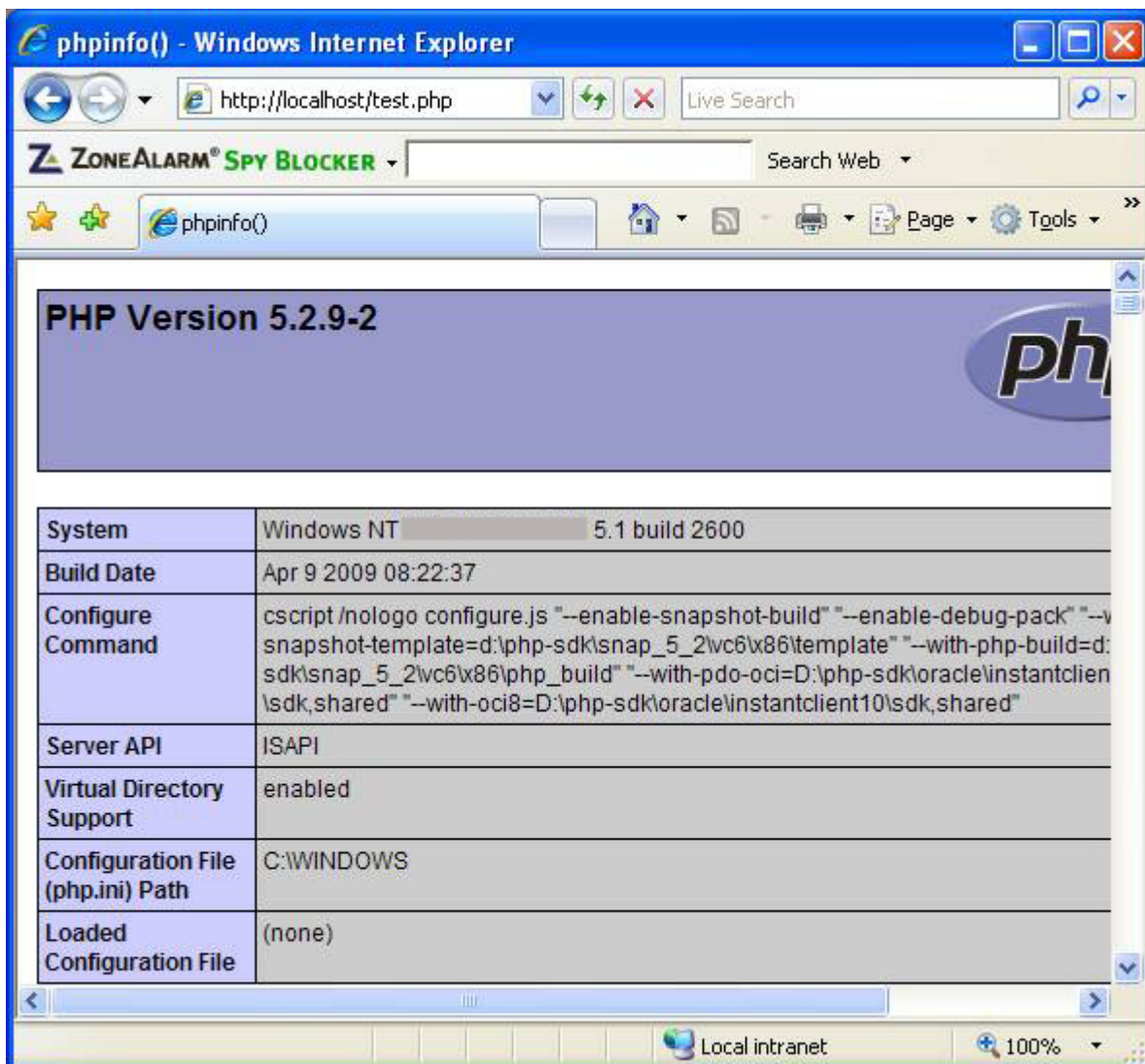
Stopped and started IIS (“net stop iisadmin” and “net start w3svc”)

Ran the script to check whether my php.ini is loaded. It is not:





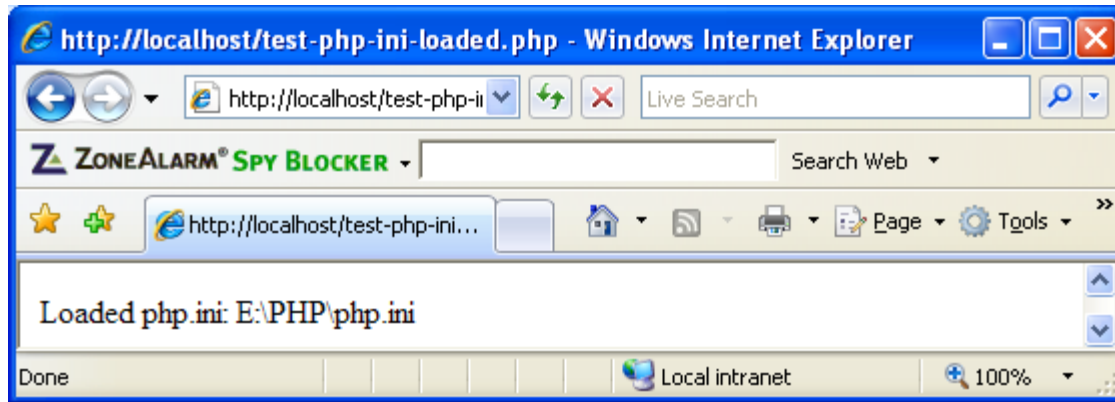
Ran the script test.php. Note that "Loaded Configuration File" is empty, while "Configuration File (php.ini) Path" shows: C:\WINDOWS:



As a side-check, I renamed hold-php.ini back to php.ini

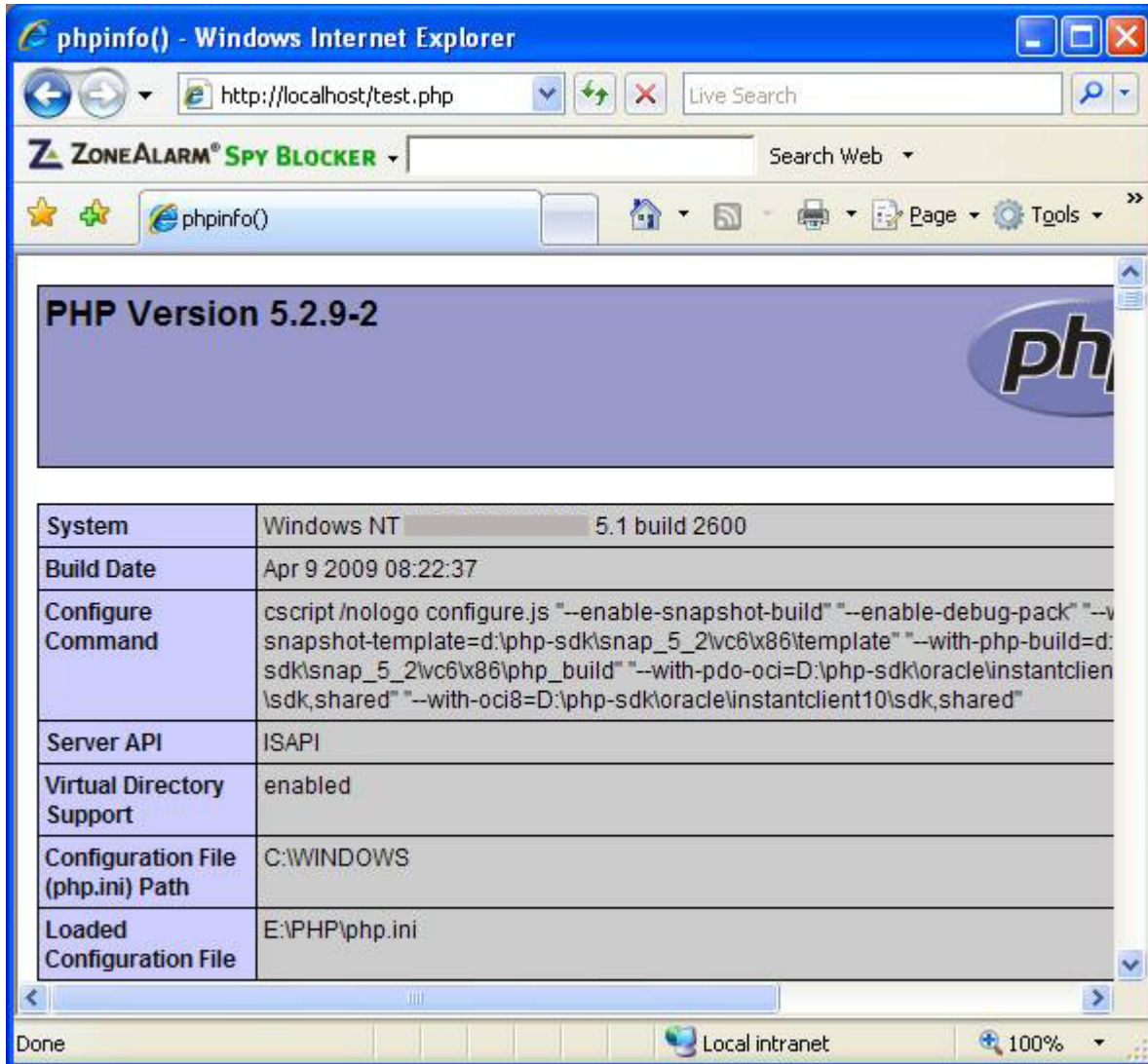
Stopped and started IIS (note: it is important to do in this sequence: rename then restart)

Ran test-php-ini-loaded.php to check whether my php.ini is loaded. It is:



Ran test.php, just to be thorough – only “Loaded Configuration File” is reporting correctly:





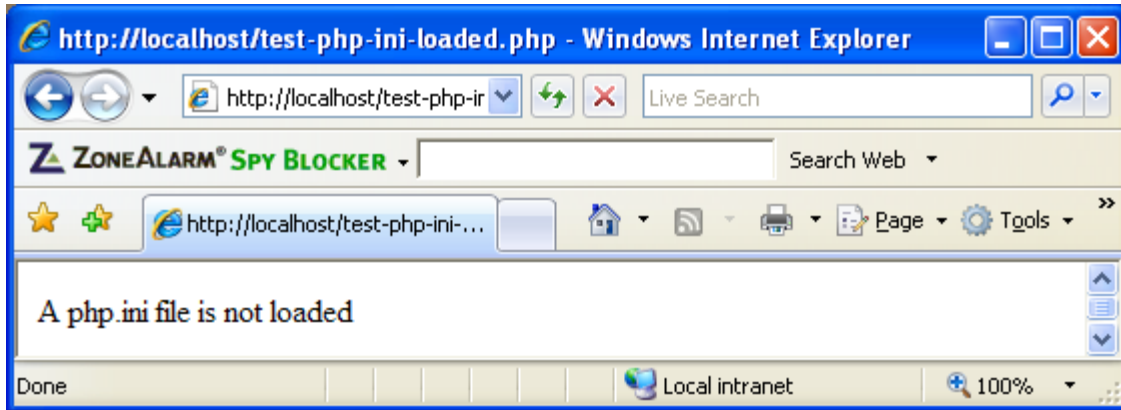
## Test 2:

Moved php.ini from E:\PHP to C:\WINDOWS

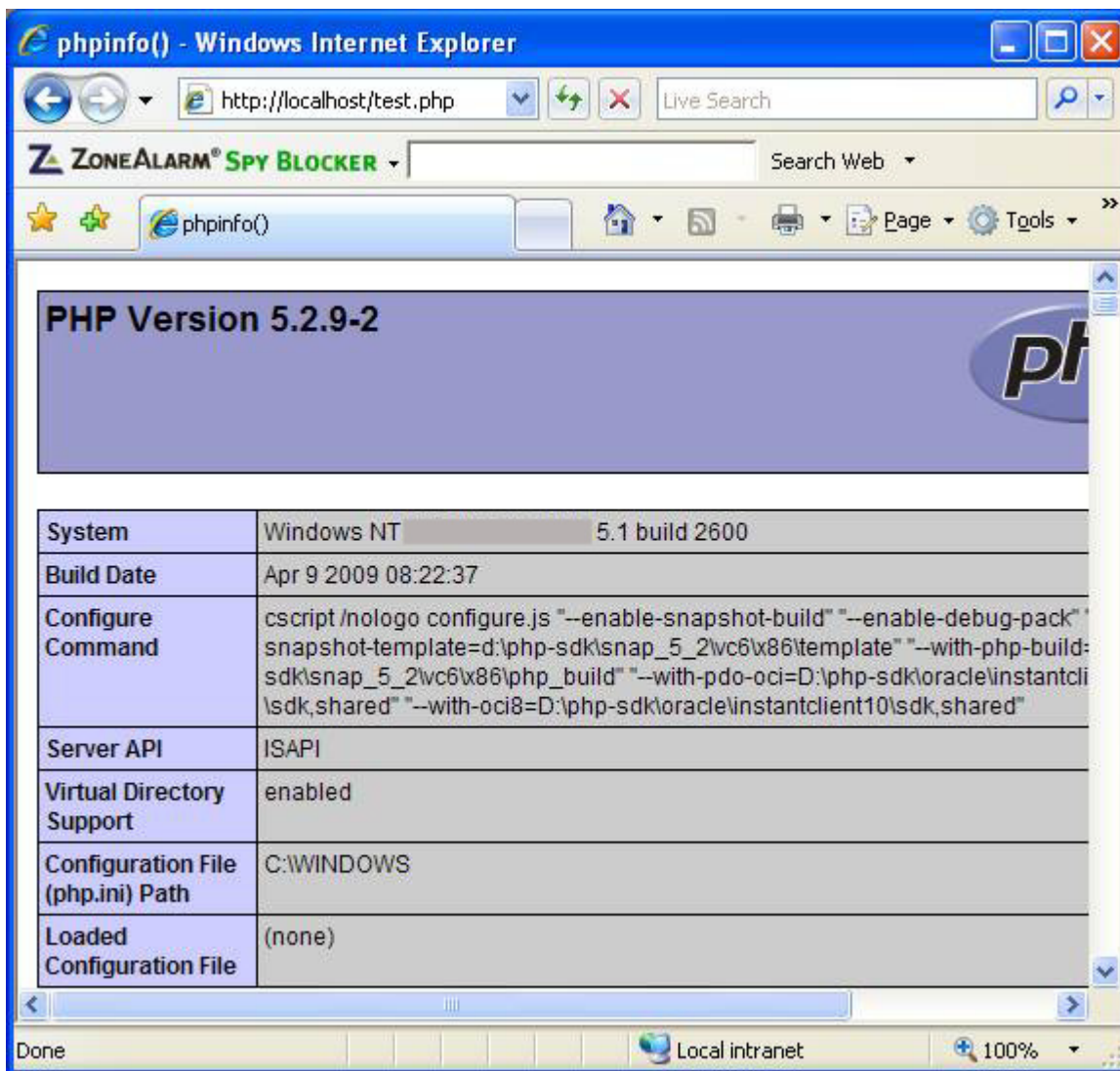
Stopped and started IIS

Ran test-php-ini-loaded.php to check if my php.ini is loaded. It is not, which surprised me:





Ran the test.php script. My php.ini was apparently not loaded, or found, by phpinfo( ), even though “Configuration File (php.ini) Path” reports it as being in C:\WINDOWS:



Per PHP's "The configuration file" note (below), C:\WINDOWS should be searched as a last resort, but apparently it isn't or it would have been displayed at "Loaded Configuration File":

"Windows directory (C:\windows or C:\winnt) (for Windows), or --with-config-file-path compile time option"

It would be easy to conclude at this point that the default phpinfo() is "hard wired" to report the "Configuration File (php.ini) Path" value as C:\WINDOWS and thus should be ignored. However, I ran a couple more tests.

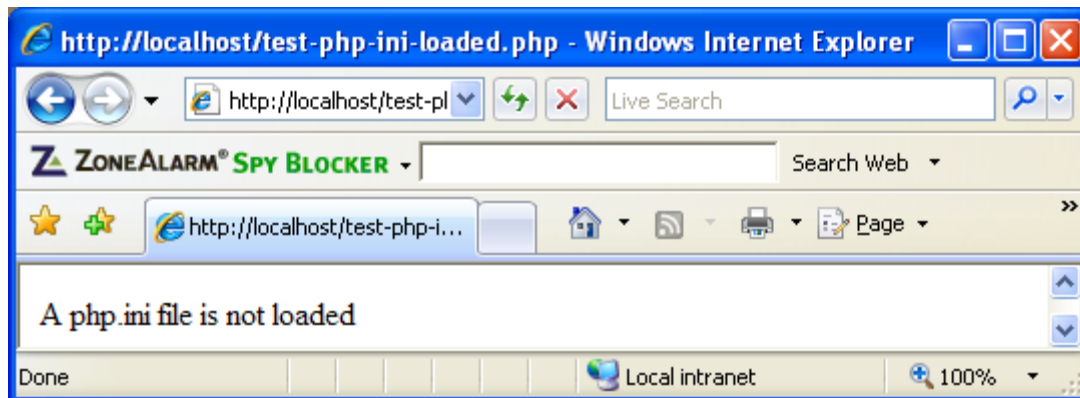
### Test 3:

Left the solo copy of my php.ini in C:\WINDOWS

Disabled PHPRC environment variable by renaming it to "Ex-PHPRC and then saved the settings (note: for this test I left the Registry entry for PHP IniFilePath intact)

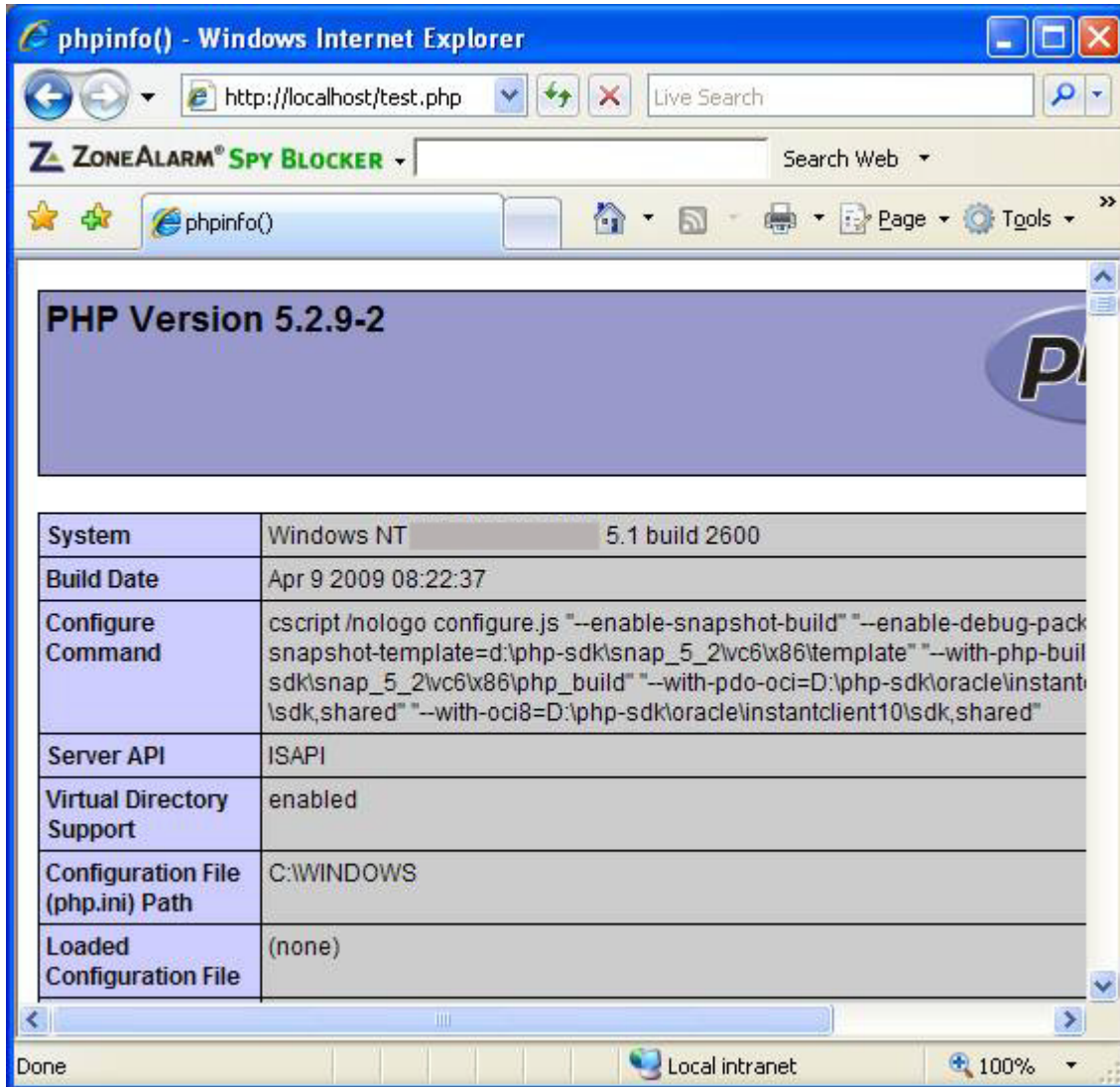
Stopped and started IIS

Ran test-php-ini-loaded.php to check whether my php.ini is loaded. Predictably it is not found:



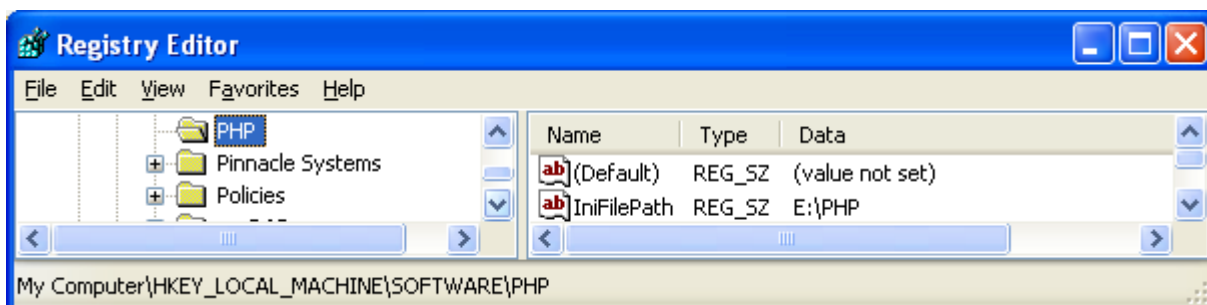
Ran the test.php script. Again, my php.ini file is apparently not found in C:\WINDOWS:





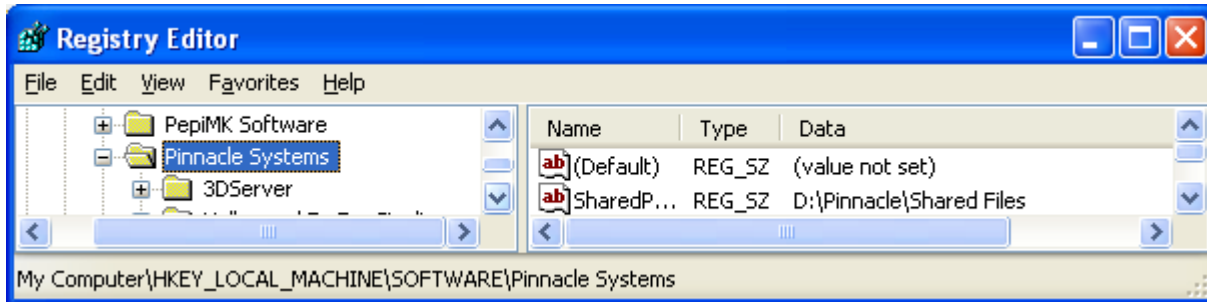
**Test 4:**

To be really thorough and eliminate all possible sources of “mis-direction” I deleted the PHP IniFilePath Registry entry (after backing up the Registry of course). Note: the PHPRC environment variable was left disabled as Ex-PHPRC. Here is the value prior to being deleted:



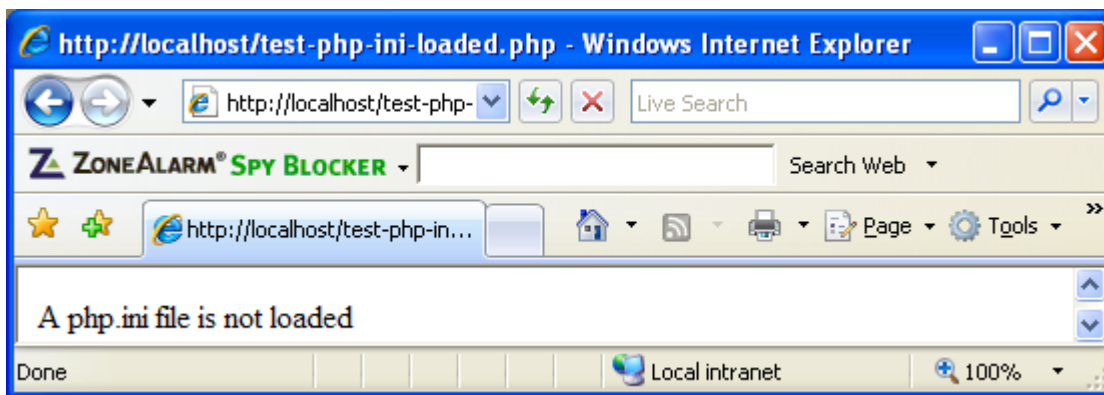
And after delete:





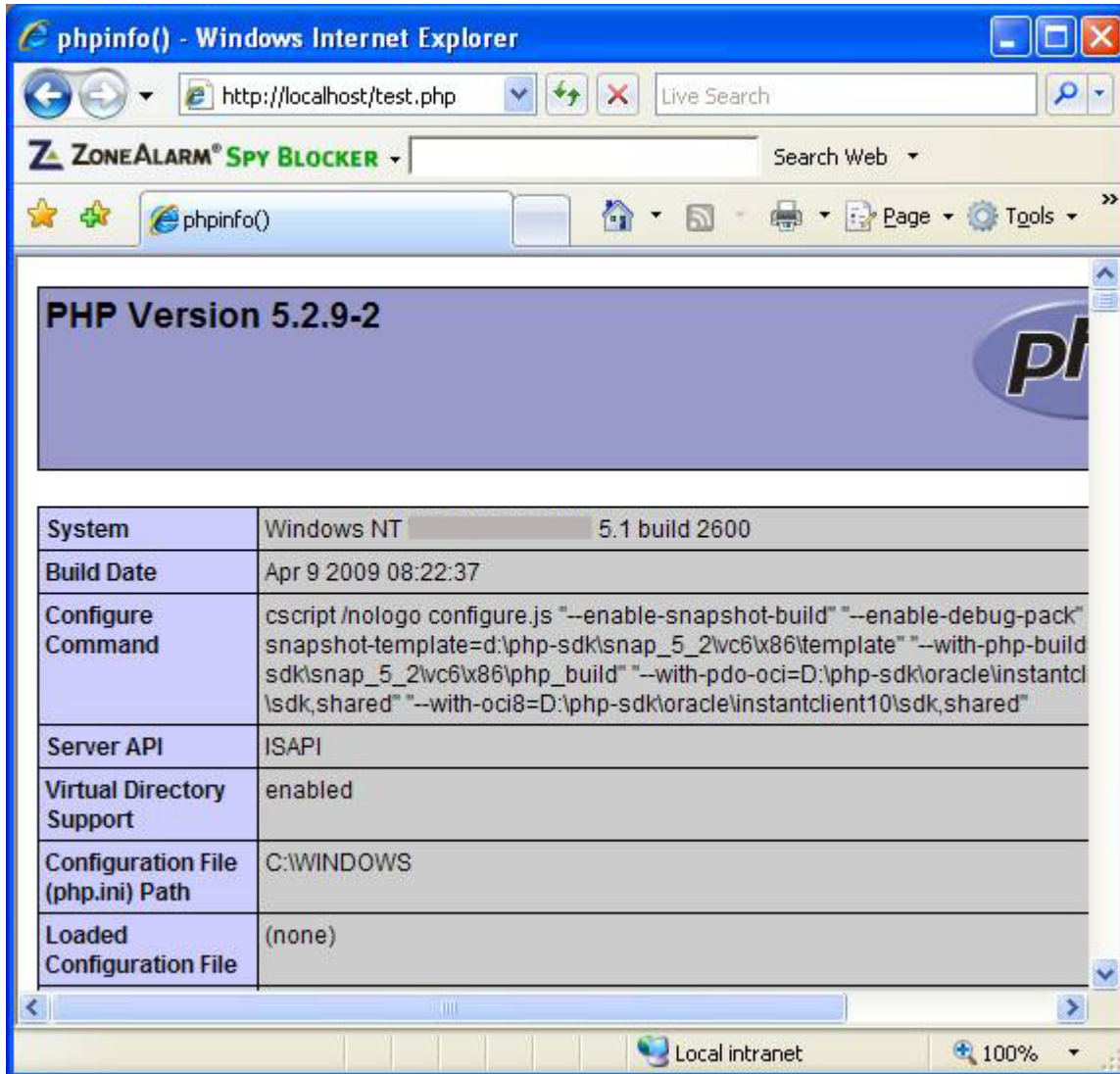
Stopped and started IIS

Ran test-php-ini-loaded.php to check whether my php.ini is loaded. Predictably it is not:



Ran the test.php script. Again, no change. My php.ini file is not found, or at least is not reported as being found under "Configuration File (php.ini) Path":





I moved my php.ini back to E:\PHP, restored PHPRC and restored the PHP Registry key using the following code in a file I called "php\_ini\_filepath\_fix.reg":

Windows Registry Editor Version 5.00

```
[HKEY_LOCAL_MACHINE\SOFTWARE\PHP]
"IniFilePath"="E:\PHP"
```

I stopped and started IIS and retested. Everything was back to "normal".

### Conclusions:

The conclusion I came to is that, in the default download version of phpinfo(), "Configuration File (php.ini) Path" is hard-wired to C:\WINDOWS. Further, that C:\WINDOWS is *not* a default location; my php.ini was not found there under any circumstances. Thus, given an otherwise "proper" setup, phpinfo() reporting C:\WINDOWS as the configuration file path for php.ini is merely misleading and is not actually harmful.





Mystery solved, case closed, time to move on.

***Next Step:***

Next we are going to create a new Database and User in MySQL for the WordPress installation. See:  
TechNote: 6-WordPress Install - IIS 5-1 Adding A Virtual Directory.

